

eva

ELEMENTARY VISUAL ARTS

Park City Education Foundation • Kimball Art Center

LESSON

7

Maia Cruz Palileo

Personal History

Verbal Directions

LESSON OVERVIEW

Maia Cruz Palileo (born 1979) is a painter and multidisciplinary artist living in Brooklyn. They are best known for creating paintings influenced by the oral histories of their family's arrival in the United States from the Philippines, as well as the history between the two countries. Students will reflect on the theme 'family' and create a painting that tells the story of an ancestor.

INSTRUCTIONAL OBJECTIVES

- Learn about the contemporary artist Maia Cruz Palileo.
- Draw personal stories from memories.
- Create art about 'family'
- Use color to share a feeling.

SUPPLIES

- Teachers choice of medium i.e. Watercolors or Clay.
- Drawing paper
- Brushes and pencils.
- Watercolor paper
- Water cups or clay tools
- Images of Maia Cruz Palileo's artwork.

TAKASHI MUR



Maia Cruz Palileo (they/them) was born in 1979 in Chicago, Illinois, to parents who had emigrated from the Philippines. Maia is best known for making paintings and is a multidisciplinary artist, who now lives in Brooklyn. The death of Maia's mother, in 1999, affected Maia profoundly. It changed Maia's sense of connection to home. The paintings Maia creates are influenced by the oral history of their family's arrival in the United States from the Philippines, as well as the history between the two countries. Maia Cruz Palileo illustrates these narratives using both memory and imagination using a library of cutouts created from tracings of photographic references. The paintings are improvisational and spontaneous, like stories. [Learn More](#)



LESSON PLAN

1. Introduce the history and images of Maia Cruz Palileo's artwork. Explain to students Maia is a living artist who is currently making artwork today in Brooklyn New York. Ask students:

- Describe the colors and mood of the artworks.
- What characters do you see and what are they doing?
- The longer you look at Maia's paintings , the more you see. What do you notice that you didn't see at first?

2. "Long Kwento," which means "long story" in Tagalog, is inspired by Palileo's grandmother, who would use the phrase to stop herself from going on too long about her stories of the Philippines. Maia Cruz Palileo uses photographs and research to create their paintings. The artist traces figures and elements from historic or personal photographs, cuts out the tracings and then rearranges them to create an idea for a painting. Maia conducted research at the Newberry Library in Chicago, which has one of the largest collections of Filipiniana in the world. Ask students:

- What happens when stories are told again and again?
- What stories have you heard about your family?

3. To start thinking about people and family stories, ask students to complete the following sentences

- One of my ancestors is _____. She/he/they was _____.

[Name an ancestor and tell us something about them]

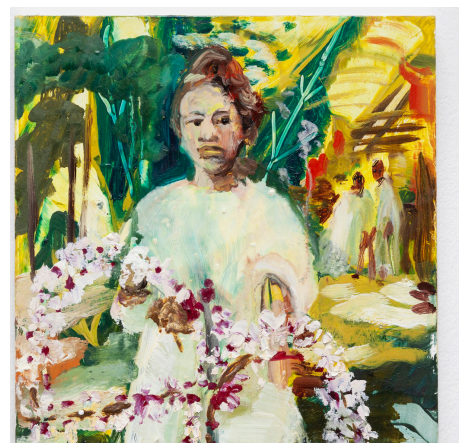
- Family means _____.

[To the Riveras, family means love, food, and music. What does family mean to you?]

4. Pass out drawing paper. Draw, paint or sculpt an ancestor. The ancestor can be eating a favorite food, playing a favorite sport, working at his or her job, doing something he or she loved, or with family members.

5. Demonstrate how to use watercolors (wet on wet, color mixture, etc.) to fill in a drawing with color. Discuss how color can support the mood of the story. Prepare artwork for display.

EVA + Draw multiple pictures of scenes from an ancestor's life. Make it into a comic or a sequential visual storyboard.





KEY IDEAS THAT CONNECT TO NATIONAL CORE ARTS STANDARDS:
Based on National Core Arts Standards visual Arts Requirements (2nd Grade).

VA:Cr2.1.2a:

Experiment with various materials and tools to explore personal interests in a work of art or design.

VA:Pr4.1.2a:

Categorize artwork based on a theme or concept for an exhibit.

VA:Re.7.2.3a:

Analyze how art exhibited inside and outside of schools (such as in museums, galleries, virtual spaces, and other venues) contributes to communities.



ADDITIONAL REFERENCES

Click on links to learn more.

- <https://www.britannica.com/place/Philippines>
- https://www.artfactory.com/art_appreciation/visual-elements/color.html
- <https://www.youtube.com/watch?v=4jM44hBDuzs>
- <https://www.youtube.com/watch?v=ye23lkKlc-4>
- <https://www.moniquemeloche.com/artists/39-maia-cruz-palileo/works/>

Brought to you by:



A special thanks to our sponsors:



Beck Family Foundation

